



*WELCOME HOME
TO AVALON APARTMENTS...*

JUST WHAT YOU WANT...SIMPLE SOPHISTICATION...WHERE THE LOCATION IS
OUTSTANDING, THE STAFF RESPONDS FAST, AND WHERE FRIENDLINESS IS PART OF THE
CHARM, MAKING AVALON, DISTINCTIVELY HOME...



SURROUND YOURSELF WITH CUSTOM LUXURIES, A ROUND-THE-CLOCK STATE OF THE ART FITNESS CENTER, AND BILLIARD ROOM, SWIMMING POOL AND SPA. AN INVITING CLUBHOUSE, GATED ENTRY, AND DISTINCTIVE APARTMENT HOMES WHICH ARE THOUGHTFULLY PLANNED AND METICULOUSLY CRAFTED OFFERING A UNIQUE BLEND OF RELAXED COMFORT AND SOPHISTICATED STYLE, WHICH ARE SECOND TO NONE.

AVALON IS LOCATED IN THE HISTORIC CITY OF GRESHAM AND CONSIDERED THE FOURTH LARGEST CITY IN OREGON, AND HOME OF THE RENOWNED MT. HOOD JAZZ FESTIVAL. GRESHAM IS WELL KNOWN AS THE “CITY OF MUSIC”.

ENJOY HIKING OR BIKING ON THE MANY TRAILS AND PARKS, INCLUDING THE WELL-RECOGNIZED SPRINGWATER TRAIL, OR PLAY A GREAT GAME OF GOLF ON A CHAMPIONSHIP COURSE. ENJOY SHOPPING FROM UNIQUE BOUTIQUES TO NATIONAL FACTORY STORES IN GRESHAM AND NEARBY TROUTDALE. YOU WILL ENJOY EXCURSIONS TO THE COLUMBIA RIVER GORGE, TO THE SPLENDOR OF MT. HOOD OR THE COSMOPOLITAN CITY OF PORTLAND, ALL JUST MINUTES AWAY FROM AVALON...EMBRACE THE EXPERIENCE!

AVALON...DISTINCTIVELY HOME...



AMENITIES

INTERIOR APPOINTMENTS

- Elegant plush interiors
- Solid core entry doors complete with door viewers
- Ceramic tile front entry
- Washers and dryers
- Formal size dining areas
- Breakfast bars
- Mini and vertical blinds
- Energy-efficient heating
- Ceiling fans in selected rooms
- Pre-wired for cable TV
- Multiple telephone outlets
- Pre-wired for highspeed data transmissions and internet access, complete with computer work stations
- Individual hot water heaters
- Easily accessible over-sized exterior storage closets
- Covered patio or terraces

BED, BATH & BEAUTY

- Over-sized walk-in closets in select apartment homes
- Mirrored wardrobe doors
- Built-in linen storage closets

KITCHEN CONVENIENCES

- Designer name brand appliances
- Frost-free refrigerators
- Electric ranges
- Custom oak cabinetry
- Multi-cycle dishwashers
- Stainless steel sinks with disposals
- Generous pantries

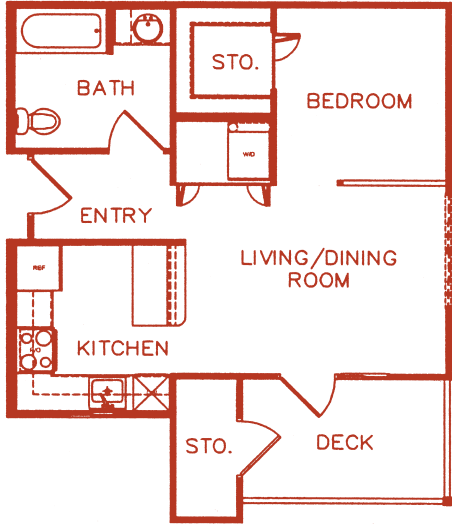
COMMUNITY ADVANTAGES

- Controlled main entry access gates
- Private detached garages available
- Assigned covered parking with each home
- Lush landscaping
- 24-hour professional on-site management
- Walking distance to the Max Light Rail System, fine dining shopping

FUN AND FITNESS

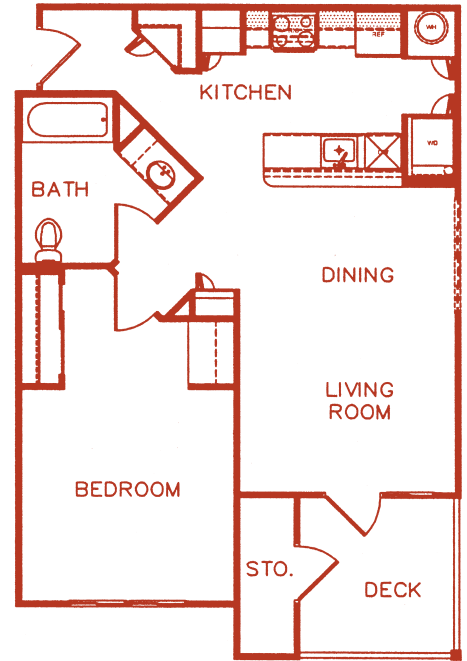
- Refreshing swimming pool and spa
- Billiard room
- Clubroom with fireplace and large screen TV
- 24-Hour, state-of-the-art fitness center complete with stereo system and TV stations
- Tot lots and Sport Court





Studio Floor Plan

559 sq.ft

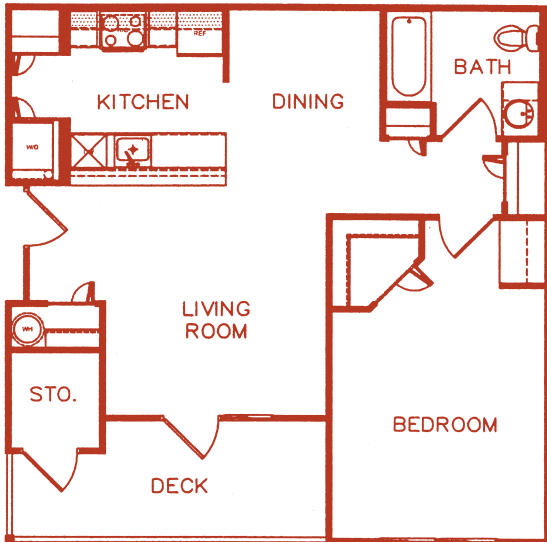


1 BR Type II Floor Plan

770 sq.ft

LEASE RATE

LEASE RATE



1 BR Type I Floor Plan

784 sq.ft

LEASE RATE

DEPOSIT REQUIREMENTS

Application Fee

Security Deposit (refundable)

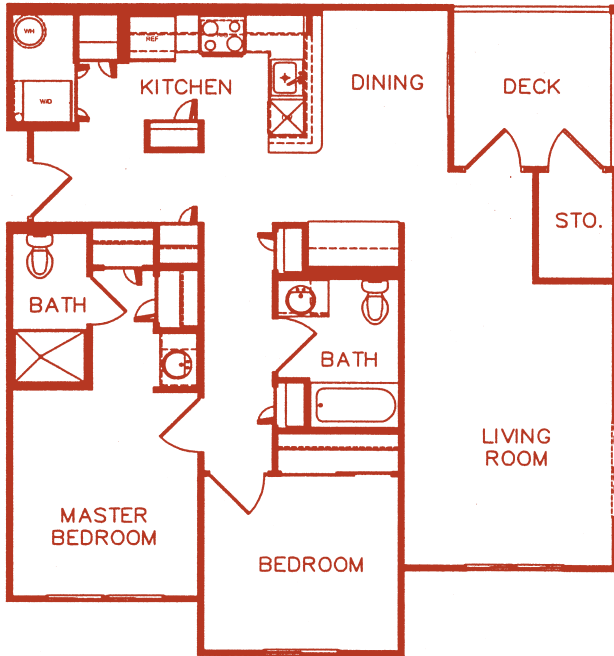
Non-Refundable Fee

Pet Deposit

Lease Terms

Garage Rate





2 BR Type I Floor Plan

1036 sq.ft

LEASE RATE

DEPOSIT REQUIREMENTS

Application Fee

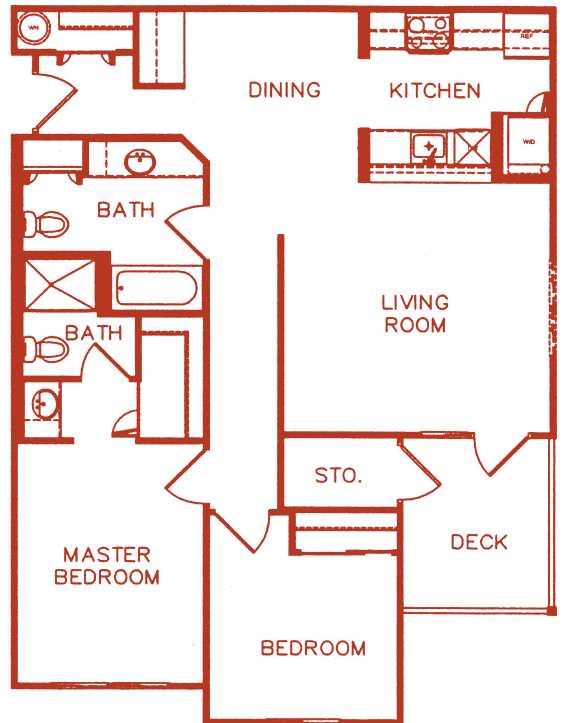
Security Deposit (refundable)

Non-Refundable Fee

Pet Deposit

Lease Terms

Garage Rate

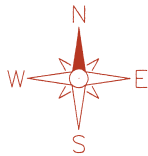
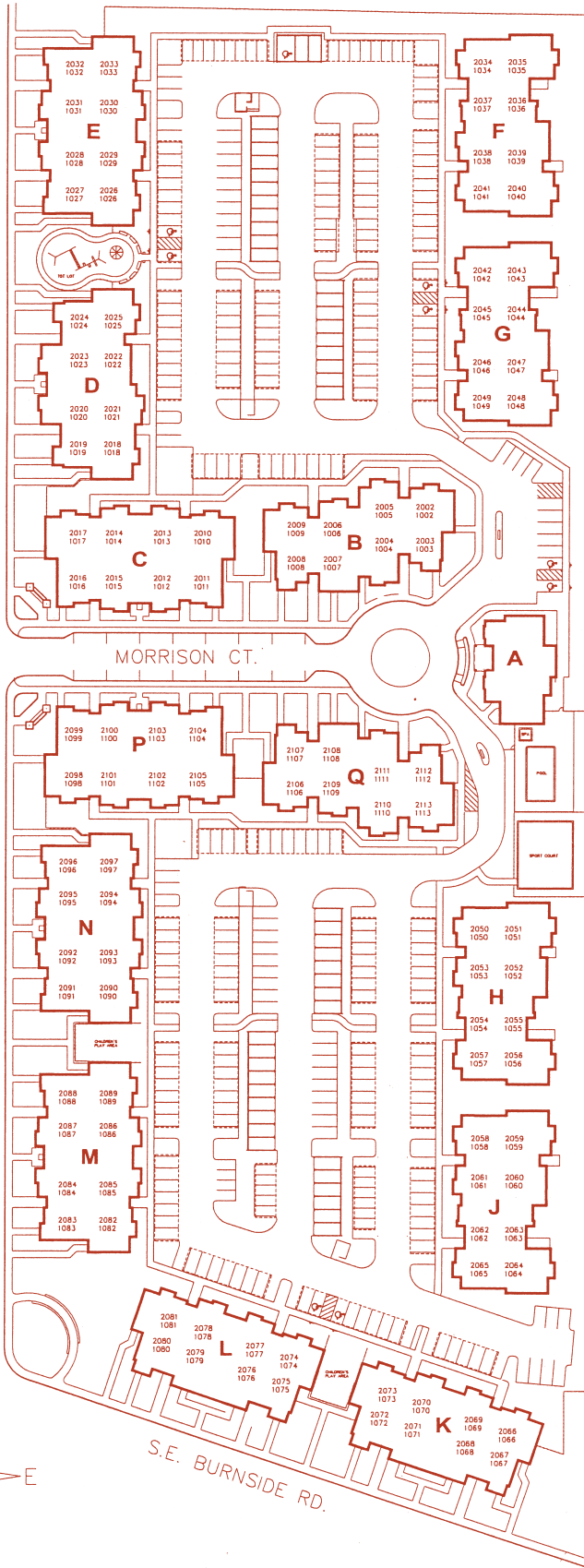


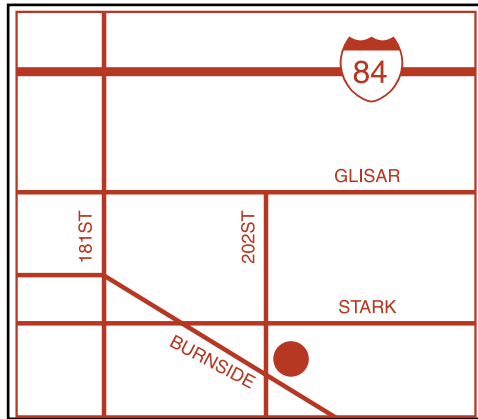
2 BR Type II Floor Plan

1038 sq.ft

LEASE RATE







AVALON IS CONVENIENTLY LOCATED IN GRESHAM, NORTH EAST OF PORTLAND, OREGON. OFFERING EASY ACCESS TO A MULTITUDE OF BUSINESS SCHOOLS, ENTERTAINMENT AND SPORTING EVENTS IN PORTLAND, AS WELL AS SCENIC AREAS SURROUNDING THE CITY.

AVALON APARTMENTS...EMBRACE THE EXPERIENCE

20300 SE Morrison Terrace
Gresham, Oregon 97030

Office (503) 665-9771
Fax (503) 665-9801
Email: 055AVA2@1031xpress.com



